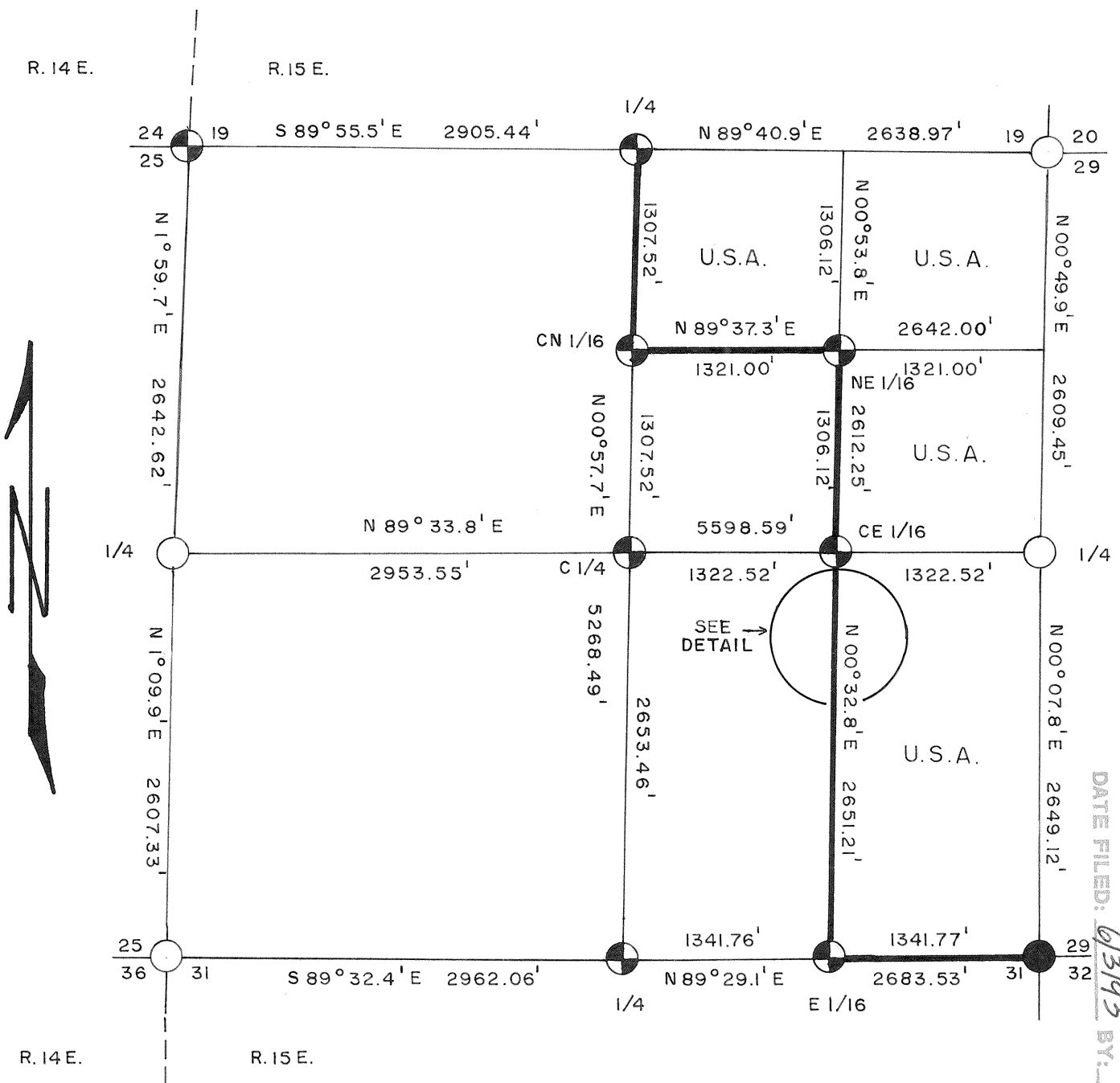
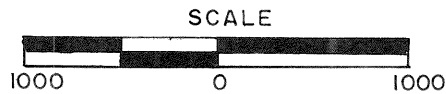


Stock No. 26273

COUNTY
SURVEYOR

SHEET 1 OF 5

PLAT OF SURVEY
U.S. GOVERNMENT LANDBEING THE N 1/2 and SE 1/4, NE 1/4; and E 1/2, SE 1/4;
SECTION 30, TOWNSHIP 31 NORTH, RANGE 15 EAST,
FOURTH PRINCIPAL MERIDIAN, LANGLADE COUNTY,
WISCONSIN

LEGEND

- 2" ALUMINUM MONUMENT, 30" LONG.
- 2" ALUMINUM MONUMENT, 36" LONG.
- 2" IRON PIPE WITH IRON CAP.
- MARKED BOUNDARY LINE OF GOVERNMENT LANDS.

CONVERSION FACTOR
FEET TO METERS - 3.280833
METERS TO FEET - 0.304801

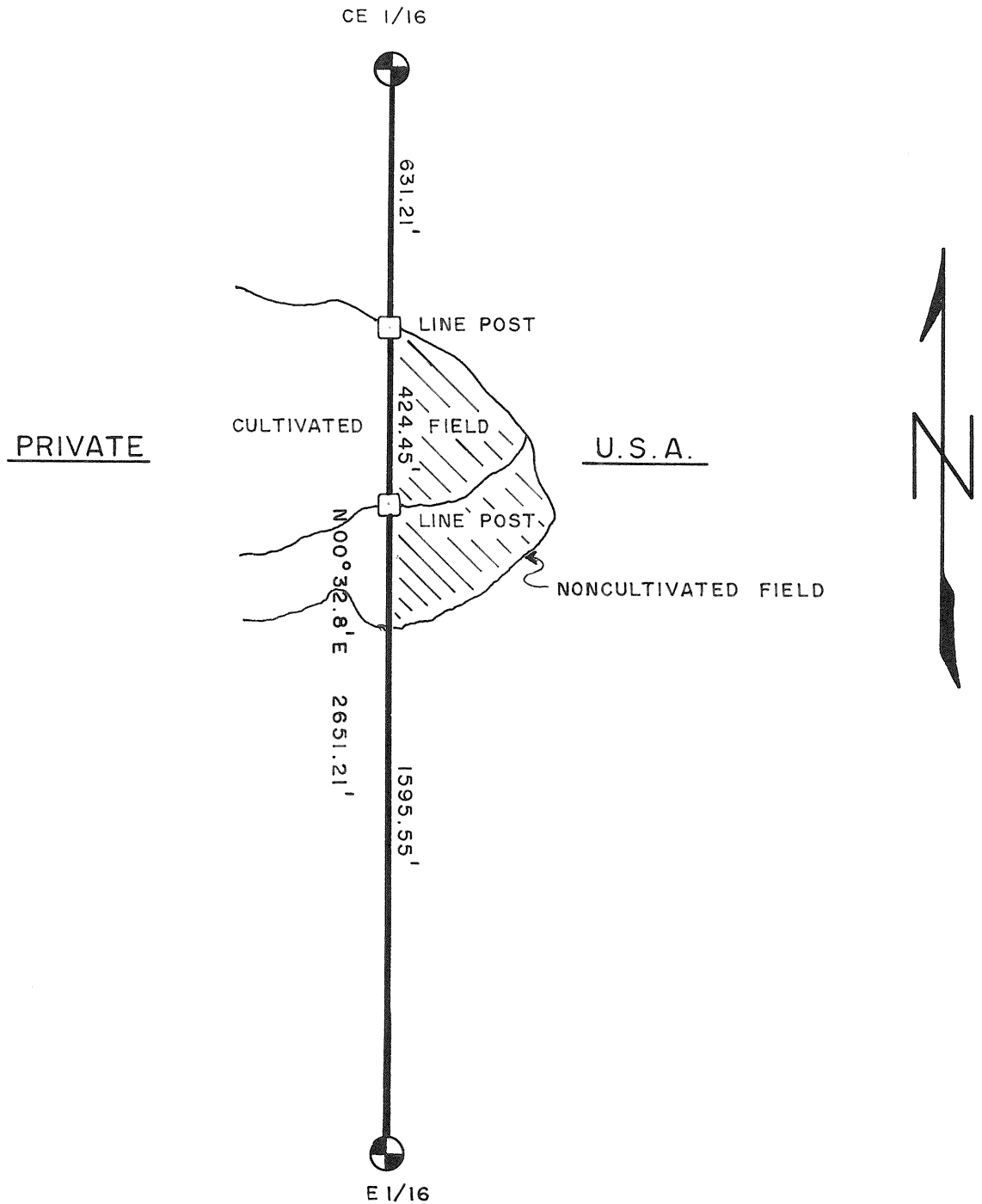
RECORD # 10045
LANGLADE COUNTY SURVEYORS OFFICE
DATE FILED: 6/3/93 BY: D.T.

26

Stock No. 26273

DETAIL

SCALE - 1" = 400'



Stock No. 26273

Sheet 3 of 5

SURVEY NOTES

This survey was made by the U. S. Department of Agriculture, Forest Service, for the purpose of restoring and establishing corners on the perimeter of Section 30, for establishing subdivisional corners within Section 30, and for locating and marking the boundaries of U. S. Government land on the perimeter and within Section 30, Township 31 North, Range 15 East, Fourth Principal Meridian, Langlade County, Wisconsin.

The U. S. Government lands in this section were acquired in 1952.

The original Government subdivision survey of this township was made in 1857.

The corner positions recovered, restored, and established by this survey are marked by the monument described in the map legend.

The corner positions established were located to an accuracy of one part in 3000.

The bearings between corner positions are true bearings as determined by solar observations.

The field notes of this survey and a copy of this plat are on file in the Forest Supervisor's Office at Rhinelander, Wisconsin.

CORNERS RECOVERED AND RESTORED

1. Corner to Sections 19, 20, 29, and 30, T.31N., R.15E.
Corner monumented by Milo Stefan, R.L.S. Certificate on file with Langlade County.
2. Corner to Sections 29, 30, 31, and 32, T.31N., R.15E.
Corner monumented by William Kelly, R.L.S. Certificate on file with Langlade County by Alan Harrison, R.L.S.
3. Corner to Sections 25, 30, 31, and 36, T.31N., R.14-15E.
Corner monumented by Milo Stefan, R.L.S. Certificate on file with Langlade County.
4. Corner to Sections 24, 19, 30, and 25, T.31N., R.14-15E.
Corner monumented by Milo Stefan, R.L.S. Certificate on file with Langlade County.
5. Quarter Corner to Sections 19 and 30, T.31N., R.15E.
Corner monumented by Milo Stefan, R.L.S. Certificate on file with Langlade County.
6. Quarter Corner to Sections 29 and 30, T.31N., R.15E.
Corner monumented by Milo Stefan, R.L.S. Certificate on file with Langlade County.
7. Quarter Corner to Sections 30 and 31, T.31N., R.15E.
Corner found marked by an iron pin, as called for in 1937 highway survey and Halisy's survey of Section 30.
Corner References:

SW Corner of House			
Foundation		N.75°E.	9.91 feet
Sugar	6"	S.4°W.	56.68 feet
Sugar	6"	N.61°W.	48.23 feet
Steel Sign Post		South	4.79 feet

Stock No. 26273

Sheet 4 of 5

8. Quarter Corner to Sections 25 and 30, T.31N., R.14-15E.
 Corner monumented by Milo Stefan, R.L.S. Certificate on file with
 Langlade County.

CORNERS ESTABLISHED

1. Center Quarter Corner to Section 30.
 Corner established at the intersection of the one-quarter lines to
 Section 30.
 Corner References:
- | | | | | |
|--|-----|--------------|-------|------|
| Brass Cap Monument Set
by G. Radtke in 1978 | | S.20°45.4'W. | 41.49 | feet |
| Double | | | | |
| White Birch | 10" | S.45°E. | 60.30 | feet |
| Power Pole | | S.20°W. | 45.03 | feet |
| Steel Sign Post | | Northeast | 1.30 | feet |
| Steel Sign Post | | Southeast | 1.60 | feet |
2. East One-Sixteenth to Sections 30 and 31.
 Corner established midpoint and on line between the southeast corner
 and the south quarter corner of Section 30.
 Corner References:
- | | | | | |
|-----------------|----|---------|-------|------|
| Spruce | 7" | S.45°E. | 25.12 | feet |
| Sugar | 4" | S.72°W. | 35.61 | feet |
| Beech | 7" | N.43°W. | 77.42 | feet |
| Steel Sign Post | | East | 1.20 | feet |
3. Center East One-Sixteenth to Section 30.
 Corner established midpoint and on line between the center quarter corner
 and the east quarter corner of Section 30.
 Corner References:
- | | | | | |
|-----------------|----|---------|-------|------|
| Beech | 5" | N.11°E. | 5.97 | feet |
| Beech | 6" | S.15°E. | 32.95 | feet |
| Sugar | 5" | S.74°W. | 51.31 | feet |
| Steel Sign Post | | North | 2.40 | feet |
4. Center North One-Sixteenth to Section 30.
 Corner established midpoint and on line between the center quarter corner
 and the north quarter corner of Section 30.
 Corner References:
- | | | | | |
|-----------------|-----|---------|--------|------|
| Red Pine | 8" | N.38°E. | 75.00 | feet |
| Red Pine | 9" | N.86°E. | 69.18 | feet |
| Sugar | 18" | S.32°W. | 124.65 | feet |
| Steel Sign Post | | East | 13.30 | feet |
5. Northeast One-Sixteenth to Section 30.
 Corner established at the intersection of the north and east one-sixteenth
 lines of Section 30.
 Corner References:
- | | | | | |
|-----------------|-----|---------|-------|------|
| Red Pine | 5" | N.32°E. | 20.53 | feet |
| White Pine | 15" | S.20°W. | 57.98 | feet |
| Red Pine | 5" | N.47°W. | 24.81 | feet |
| Steel Sign Post | | West | 1.00 | feet |

Stock No. 26273

Sheet 5 of 5

SURVEYOR'S AFFIDAVITState of Wisconsin]
County of Langlade] SS

I, Milo E. Stefan, Cadastral Surveyor, U. S. Forest Service and a registered surveyor in the State of Wisconsin, hereby certify that I have surveyed and subdivided Section 30, Township 31 North, Range 15 East, Fourth Principal Meridian, State of Wisconsin.

The plat map and the notes herewith are a correct representation of the land surveyed and divided. I have surveyed and subdivided said section in accordance with the rules for survey of the public lands and with the statutes of the State of Wisconsin.



Date of Survey: 1985

Cadastral Surveyor, U. S. Forest Service
R.L.S., State of Wisconsin
Certificate S-1558

Plat Ready For Filing:

District Ranger