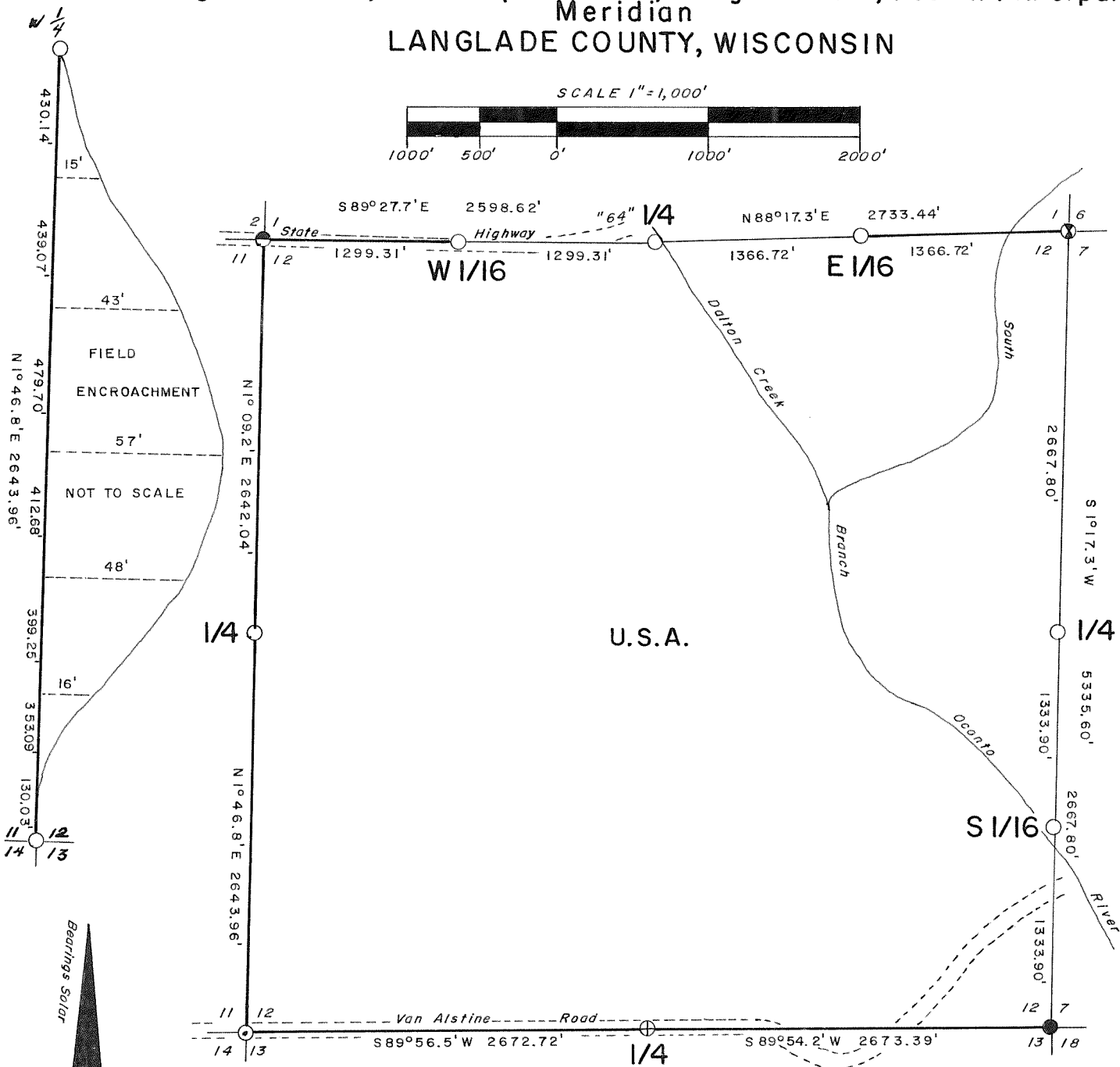


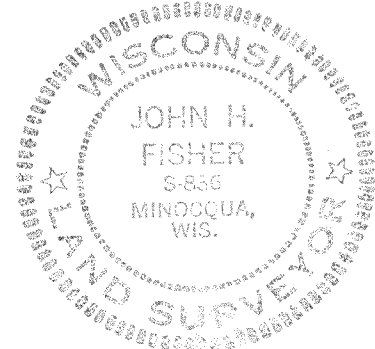
Stock No. 26273

PLAT OF SURVEY  
U.S. GOVERNMENT LAND

Being Section 12, Township 31 North, Range 14 East, Fourth Principal Meridian  
LANGLADE COUNTY, WISCONSIN



NORTH COUNTY SURVEYORS



*John H. Fisher*  
John H. Fisher R.L.S. S-836

Dated 10/12/82

LEGEND

- = Recovered 2" iron pipe with brass tablit.
- ⊙ = Recovered 1" iron pipe in Van Alstine Road.
- ⊗ = Recovered bed rail, replaced with a 2" aluminum pipe capped with a 3" diameter aluminum tablit stamped to identify corner.
- ⊕ = Corner monumented with railroad spike, set from witness monuments.
- = Corner monumented: Set 2" aluminum pipe capped with a 3" diameter aluminum tablit stamped to identify corner.
- ⊙ = Corner monumented: Set railroad spike in State Highway "64".
- = Line marked by blazed and painted tress and iron sign post set in line.

CONVERSION FACTOR

Feet to Meters = .304801  
Meters to Feet = 3.280833

RECORD # 10052  
LANGLADE COUNTY SURVEYORS OFFICE  
DATE FILED: 6/4/93 BY: D.T.

**Stock No. 26273**SURVEY NOTES

This survey was made by North Country Surveyors pursuant to United States Department of Agriculture, Forest Service Contract "No. 53-569R-2-00011, Cadastral Survey" for the purpose of recovering, restoring, establishing, marking and perpetuating the corners and boundary lines of the U. S. Government land on the perimeter of Section 12, T31N, R14E, Fourth Principal Meridian, Langlade County, Wisconsin as shown on the plat herewith.

The original Government survey of the East township line was made by Artemas Curtis, Deputy Surveyor in 1857. The original Government subdivision survey of this township was made by James McBride in 1857.

Bearings between corner positions are true bearings by reference to a solar observation. All distances shown hereon are in feet and hundredths of feet. The control traverse was measured by use of electronic distance measuring equipment to an accuracy of one part in 10,000 or greater. Corners recovered, restored and established by this survey are marked by the monument described in the map legend. Each monumented corner position is referenced to blazed and scribed bearing trees and described reference objects.

CORNERS RECOVERED

## 1. Corner to Sections 1-6-7-12

Corner monument is 2" aluminum pipe, 3 feet in length with aluminum tablet stamped to identify corner. Monument replaces old bed rail of unknown origin which agrees well with calls to South branch of Oconto River.

## Corner References

Red Maple	9"	N 8°E	13.26 feet
White Pine	12"	S66°W	4.88 feet
White Pine	12"	N62°E	21.70 feet
Steel post with sign set West, 1.0 feet			

## 2. Corner to Sections 11-12-13-14

Corner monument is 1" galvanized iron pipe with railroad spike in center located 1" below surface of Vanalstine Road. Corner re-established by William F. Kelly, and shown on Certified Land Corner Restoration form dated December 5, 1974.

**Stock No. 26273****3. Corner Common to Sections 12-7-18-13**

Corner monument is 2" iron pipe with brass cap stamped to identify corner dated 1965 and set by Jean F. Resvick.

**Corner References**

Spruce	6"	N85°W	38.91 feet
Aspen	9"	N61°E	14.15 feet
Balsam	13"	N24°W	28.20 feet
Steel post with sign set West, 0.8 feet			

**4. Quarter Corner to Sections 1 and 12**

Corner monument is 2" aluminum pipe, 5 feet in length with aluminum tablet stamped to identify corner. Corner monument replaces tip of old scribed post found down at location from which evidence of roots of original Tamarack bearing tree were found and a downed Cedar tree fitting original location bears N3°E, 24 feet, but has no scribing remaining.

**Corner References**

Cedar	22"	S 7°E	48.76 feet
Cedar	8"	N78°E	31.74 feet
Red Maple	9"	S59°W	26.30 feet
Steel post with sign set West, 0.8 feet			

**5. Quarter Corner to Sections 11 and 12**

Corner monument is 2" aluminum pipe, 3 feet in length with aluminum tablet stamped to identify corner. Corner monument replaces iron bed rail found at fence corner post which fits reasonably with distances north and south.

**Corner References**

Red Pine	11"	N35°E	25.05 feet
Red Pine	9 "	N88°E	18.81 feet
Red Pine	8 "	S16°E	53.58 feet
Steel post with sign set South, 0.7 feet.			

**6. Quarter Corner to Section 12 and 13**

Corner monument is 1" iron pipe with railroad spike in top at road surface in centerline of Vanalstine Road. Corner was established by William F. Kelly and is shown on Certified Corner Land Restoration form dated December 4, 1974.

**Stock No. 26273**CORNERS ESTABLISHED

## 1. Corner to Sections 1-2-11-12

Corner monument is railroad spikes set in Highway 64. Corner established from information on Division of Highways Right of Way Plat dated 1-15-47 for Project T019 (2). 2" aluminum pipes, 3 feet in length with aluminum tablet stamped "Witness Corner" set North 30.00 feet and South 40.00 feet of corner.

## Corner References

Red Maple	9"	N60°E	62.35 feet
Sugar Maple	11"	N16°E	35.98 feet
Black Cherry	6"	S 3°W	61.00 feet

## 2. Quarter Corner to Sections 7 and 12

Set 2" aluminum pipe, 3 feet in length with aluminum tablet stamped to identify corner, on line and at the mid point between the Corner to Sections 1-6-7-12 and the Corner to Sections 12-7-18-13.

## Corner References

White Pine	11"	S31°W	36.45 feet
White Pine	8"	N45°W	25.00 feet
White Pine	5"	N38°E	19.80 feet
Steel post with sign set East, 0.8 feet.			

## 3. East Sixteenth Corner to Sections 1 and 12

Corner monument is 2" aluminum pipe, 3 feet in length with aluminum tablet stamped to identify corner. Monument is set on line and at mid point between Corner to Sections 1-6-12-7 and Quarter Corner to Sections 1 and 12.

## Corner References

Aspen	4"	S40°E	25.35 feet
Red Pine	9"	S30°W	98.44 feet
Red Pine	8"	N84°W	82.85 feet
Steel post with sign set North, 0.8 feet			

Stock No. 26273

## 4. West Sixteenth Corner to Sections 1 and 12

Corner monument is 2" aluminum pipe, 3 feet in length with aluminum tablet stamped to identify corner. Monument is set on line and at mid point between Corner to Sections 1-2-11-12 and Quarter Corner to Sections 1 and 12.

## Corner References

White Pine	13"	N66°W	30.63 feet
White Pine	6"	N11°W	13.43 feet
White Pine	8"	N36°E	16.15 feet
Steel post with sign set North, 0.7 feet			

## 5. South Sixteenth Corner to Sections 7 and 12

Corner monument is 2" aluminum pipe, 5 feet in length with aluminum tablet stamped to identify corner. Monument set on line and at mid point between Corner to Sections 12-7-18-13 and Quarter Corner to Sections 7 and 12.

## Corner References

Spruce	12"	N31°W	29.60 feet
Spruce	14"	S75°E	44.22 feet
White Pine	14"	N68°E	76.80 feet
Steel post with sign set East, 0.6 feet			

SURVEYOR' AFFIDAVIT

State of Wisconsin)  
Langlade County )ss

I, John H. Fisher, Land Surveyor, registered in the State of Wisconsin, hereby certify that I have surveyed Section 12, T31N, R14E, Fourth Principal Meridian, County of Langlade, State of Wisconsin, in accordance with the rules for the survey of the public lands and with the statutes of the State of Wisconsin. The plat map and survey notes are an accurate representation of the corners recovered and established.

*John H. Fisher* 10/12/82  
\_\_\_\_\_  
Registered Land Surveyor, State of  
Wisconsin

Certificate No. S-836

Date of Survey: March - October 1982

NOTE: "The field survey notes and a copy of the plat of survey are on file in the Forest Supervisor's Office in Rhineland, Wisconsin."

