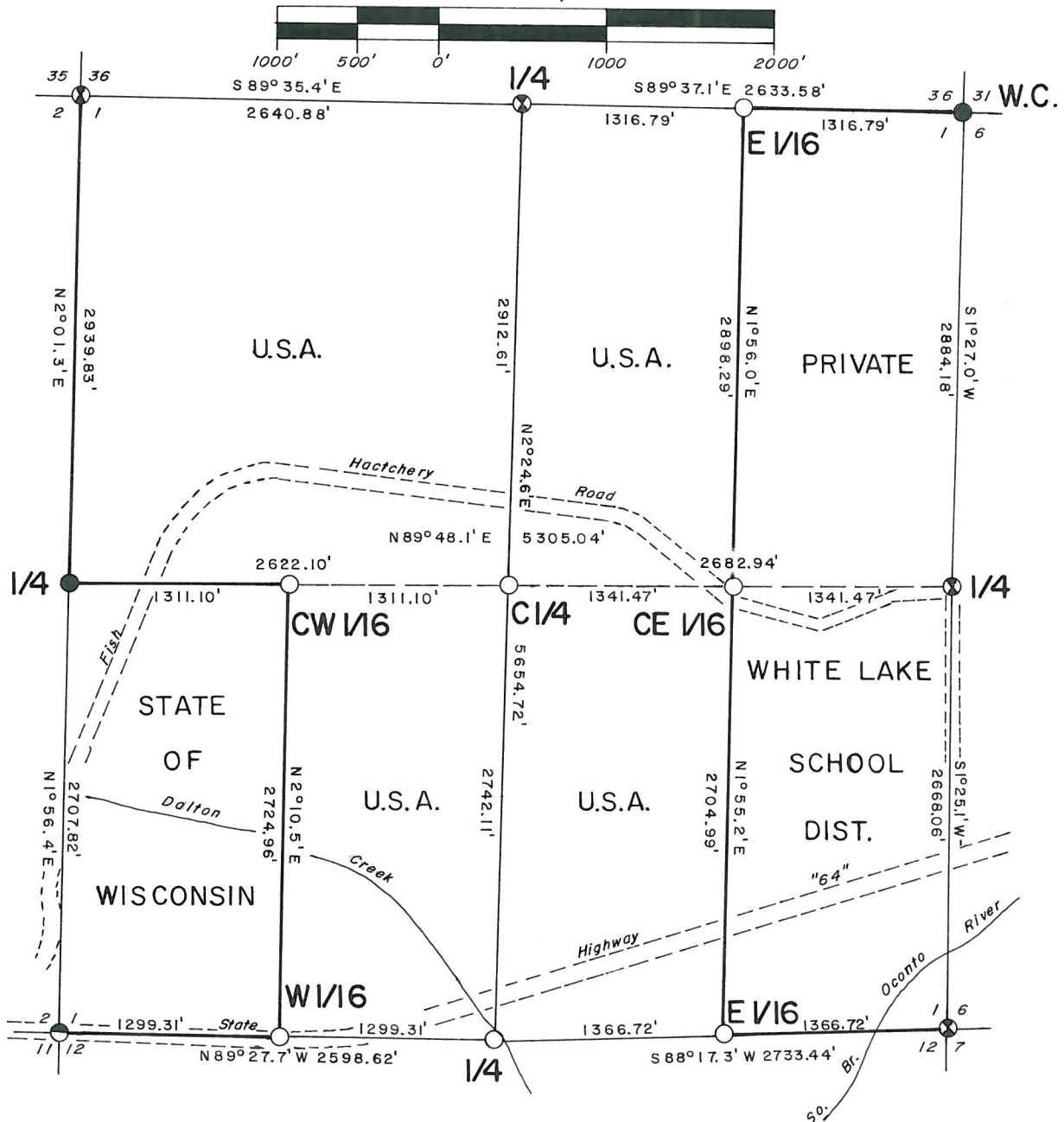


PLAT OF SURVEY U. S. GOVERNMENT LAND

SCALE 1"=1,000'



- = Recovered 2" brass cap in concrete monument.
- ⦿ = Recovered bed rail, replaced with 2" aluminum pipe capped with a 3" diameter aluminum tablit stamped to identify corner.
- = Corner monumented: Set 2" aluminum pipe capped with 3" diameter aluminum tablit stamped to identify corner.
- ◐ = Corner monumented: Set railroad spike in State Highway "64".
- = Line marked by blazed and painted trees and iron sign post set in line.

WISCONSIN LAND SURVEYORS

JOHN H. FISHER

5-838

MILWAUKEE, WIS.

John H. Fisher
John H. Fisher R.L.S. S-836

CONVERSION FACTOR
Feet to Meters = .304801
Meters to Feet = 3.280833

Drawn by Dennis B. Roberts

RECORD # 10053
 LANGLADE COUNTY SURVEYORS OFFICE
 DATE FILED: 6/3/93 BY: BT

Stock No. 26273SURVEY NOTES

This survey was made by North Country Surveyors pursuant to United States Department of Agriculture, Forest Service Contract "No. 53-569R-2-00011, Cadastral Survey" for the purpose of recovering, restoring, establishing, marking and perpetuating the corners and boundary lines of the U. S. Government land on the perimeter and within Section 1, T31N, R14E, Fourth Principal Meridian, Langlade County, Wisconsin as shown on the plat herewith.

The original Government survey of the exterior township lines were run by Artemas Curtis, Deputy Surveyor in 1857. The original Government subdivision survey of this township was made by James McBride in 1857.

Bearings between corner positions are true bearings by reference to a solar observation. All distances shown hereon are in feet and hundredths of feet. The control traverse was measured by use of electronic distance measuring equipment to an accuracy of one part in 10,000 or greater. Corners recovered, restored and established by this survey are marked by the monument described in the map legend. Each monumented corner position is referenced to blazed and scribed bearing trees and described reference objects.

CORNERS RECOVERED

1. Corner to Sections 1-6-31-36

Actual corner location is center of 8" diameter corner fence post. Witness corner is 6" diameter concrete monument 0.7 feet south as established by Jean F. Resvick. Certified Land Corner Restoration form dated May 23, 1968 is on record.

2. Corner to Sections 1-2-35-36

Corner monument is 2" aluminum pipe, 3 feet in length with aluminum tablet stamped to identify corner. Corner replaces old bed rail and squared wood post of unknown origin which agree well with recorded distances to other corners. Corner falls in cultivated Pine plantation.

Corner References

Red Maple	7"	S 1°E	47.31 feet
Oak	6"	S56°W	11.33 feet
Red Pine	7"	S51°E	15.88 feet
Red Pine	7"	N 8°E	23.25 feet
Steel post with sign set 1.0 foot, South			

Stock No. 26273**3. Corner to Sections 1-6-7-12**

Corner monument is 2" aluminum pipe, 3 feet in length with aluminum tablet stamped to identify corner. Monument replaces old bed rail of unknown origin which agrees well with calls to South branch to Oconto River.

Corner References

Red Maple	9"	N 8°E	13.26 feet
White Pine	12"	S66°W	4.88 feet
White Pine	12"	N62°E	21.70 feet
Steel post with sign set, West, 1.0 feet			

4. Quarter Corner to Sections 1 and 36

Corner monument is 2" aluminum pipe, 3 feet in length with aluminum tablet stamped to identify corner. Monument replaces iron bed rail of unknown origin found in Norway Pine plantation. Monument agrees within reason for proportioned location of Quarter Corner.

Corner References

Red Pine	7"	N33°W	5.25 feet
Red Pine	7"	N35°W	11.32 feet
Red Pine	6"	N80°E	15.79 feet
Steel post with sign set East, 0.6 feet			

5. Quarter Corner to Sections 1 and 2

Corner monument is 4" brass cap in cement as established by Raymond J. Hallisy on May 5, 1969. Corner Restoration Form on record.

6. Quarter Corner to Sections 1 and 12

Corner monument is 2" aluminum pipe, 5 feet in length with aluminum tablet stamped to identify corner. Corner monument replaces tip of old scribed post found down at location from which evidence of roots of the original Tamarack bearing tree are found and a downed Cedar tree fitting original location bears N3°E, 24 feet, but has no scribing remaining.

Corner References

Cedar	22"	S 7°E	48.76 feet
Cedar	8"	N78°E	31.74 feet
Red Maple	9"	S59°W	26.30 feet
Steel post with sign set West, 0.8 feet			

Stock No. 26273**7. Quarter Corner to Sections 1 and 6**

Corner monument is 2" aluminum pipe, 3 feet in length with aluminum tablet stamped to identify corner. Monument replaces old bed rail found at fence corner.

Corner References

Oak	10"	N 6°E	22.63 feet
Red Maple	9"	N30°W	20.63 feet
Tamarack	6"	S36°W	61.20 feet
Steel post with sign set East, 0.8 feet			

CORNERS ESTABLISHED**1. Corner to Sections 1-2-11-12**

Corner monument is railroad spike set in the pavement of Highway 64. Corner established from information on Division of Highways Right Of Way Plat, dated 1-15-47 for Project T019 (2). 2" aluminum pipes, 3 feet in length with aluminum tablets stamped "Witness Corner" set North 30.00 feet and South 40.00 feet of corner.

Corner References

Red Maple	9"	N60°E	62.35 feet
Sugar Maple	11"	N16°E	35.98 feet
Black Cherry	6"	S 3°W	61.0 feet

2. Center Quarter Corner Section 1

Monument is 2" aluminum pipe, 3 feet in length with aluminum tablet stamped to identify corner. Monument is set at the intersection of the North-South and East-West Quarter lines of Section 1

Corner References

Red Maple	7"	N 2°E	34.47 feet
White Pine	5"	S77°W	37.37 feet
Sugar Maple	7"	S13°W	20.62 feet
Steel post with sign set West, 0.8 feet			

3. East Sixteenth Corner to Sections 1 and 12

Corner monument is 2" aluminum pipe, 3 feet in length with aluminum tablet stamped to identify corner. Monument is set on line and at mid point between Corner to Sections 1-6-12-7 and Quarter Corner to Sections 1 and 12.

Stock No. 26273

Corner References

Aspen	4"	S40°E	25.35 feet
Red Pine	9"	S30°W	98.44 feet
Red Pine	8"	N84°W	82.85 feet

Steel post with sign set North, 0.8 feet

4. Center East Sixteenth Section 1

Corner monument is 2" aluminum pipe, 3 feet in length with aluminum tablet stamped to identify corner. Monument set on line between Quarter Corner to Sections 1 and 6 and Center Quarter Corner of Section 1 and equidistant between two corners.

Corner References

Aspen	12"	N56°W	18.24 feet
Red Maple	4"	S75°W	53.75 feet
Aspen	7"	S20°W	40.95 feet

Steel post with sign set South, 0.7 feet

5. West Sixteenth Corner to Sections 1 and 12

Corner monument is 2" aluminum pipe, 3 feet in length with aluminum tablet stamped to identify corner. Monument is set on line and at mid point between Corner to Sections 1-2-11-12 and Quarter Corner to Sections 1 and 12.

Corner References

White Pine	13"	N66°W	30.63 feet
White Pine	6"	N11°W	13.43 feet
White Pine	8"	N36°E	16.15 feet

Steel post with sign set North, 0.7 feet

6. Center West Sixteenth Corner to Section 1

Corner monument is 2" aluminum pipe, 3 feet in length with aluminum tablet stamped to identify corner. Monument set on line and at mid point between Quarter Corner to Sections 1 and 2 and Center Quarter Corner to Section 1.

Corner References

Maple	5"	N29°W	13.20 feet
Sugar Maple	4"	N55°E	24.67 feet
Oak	9"	S 6°W	41.87 feet

Steel post with sign set South, 1.3 feet

Stock No. 26273

7. East Sixteenth Corner to Sections 1 and 36

Corner monument is 2" aluminum pipe 3 feet in length with aluminum tablet stamped to identify corner. Monument set on line and at mid point between Corner to Sections 1-6-31 and 36 and Quarter Corner to Sections 1 and 36.

Corner References

Sugar Maple	8"	N56°W	14.48 feet
Sugar Maple	10"	N 8°E	27.17 feet
Sugar Maple	6"	S48°E	22.52 feet
Steel post with sign set East, 1.6 feet.			

SURVEYOR'S AFFIDAVIT

State of Wisconsin)
Langlade County)ss

I, John H. Fisher, Land Surveyor, registered in the State of Wisconsin, hereby certify that I have surveyed and subdivided Section 1, T31N, R14E, Fourth Principal Meridian, County of Langlade, State of Wisconsin, in accordance with the rules for the survey of the public lands and with the statutes of the State of Wisconsin. The plat map and survey notes are an accurate representation of the corners recovered and established.



John H. Fisher 10/12/82
Registered Land Surveyor, State of
Wisconsin

Certificate No. S-836

Date of Survey: March - October 1982

NOTE: "The field survey notes and a copy of the plat of survey are on file in the Forest Supervisor's Office in Rhineland, Wisconsin."