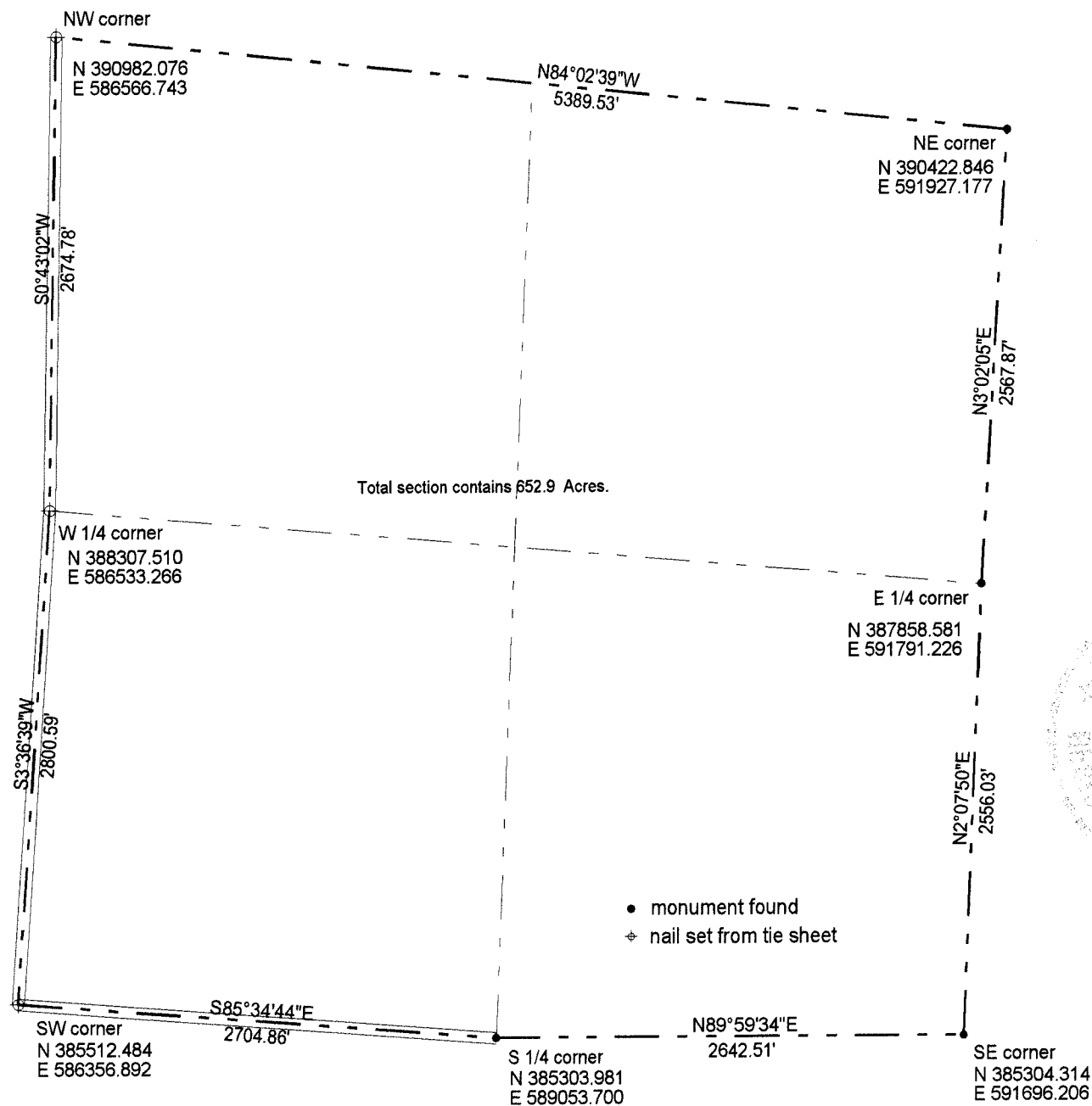


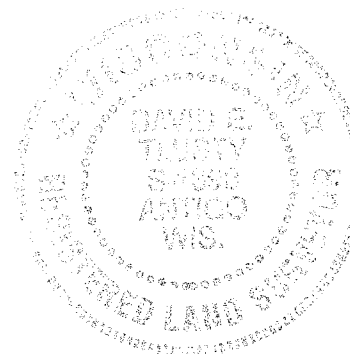
LANGLADE COUNTY COORDINATE SYSTEM GRID BEARINGS SHOWN



Section 8, T32N, R10E Town of Peck

All coordinates shown are Langlade County Coordinate system grid coordinates obtained by direct RTK GPS observations on the corners. All corners shown have ties sheets on file in the Langlade County Surveyors office.

The Northeast corner and the East 1/4 corner are 3" iron pipes with iron caps previously set by Hutchinson. The Southeast corner is a 2" iron pipe with brass cap set by Tlusty. The South 1/4 corner is an aluminum capped iron pipe set by Arnott. The Southwest corner, West 1/4 corner and the Northwest corner are nails set by using the most recent ties sheets on file for these corners. The North 1/4 corner has been searched for and no evidence of the Hutchinson pipe has been found. The corner has been determined to be lost and will be re-established by single proportionate methods between adjoining section corners.



I, David E. Tlusty, Langlade County Surveyor, do hereby certify that this map is a true and correct representation of a survey of the perimeter of Section 5-32-10, and that this survey is correct to the best of my knowledge and belief.

December 28, 2004

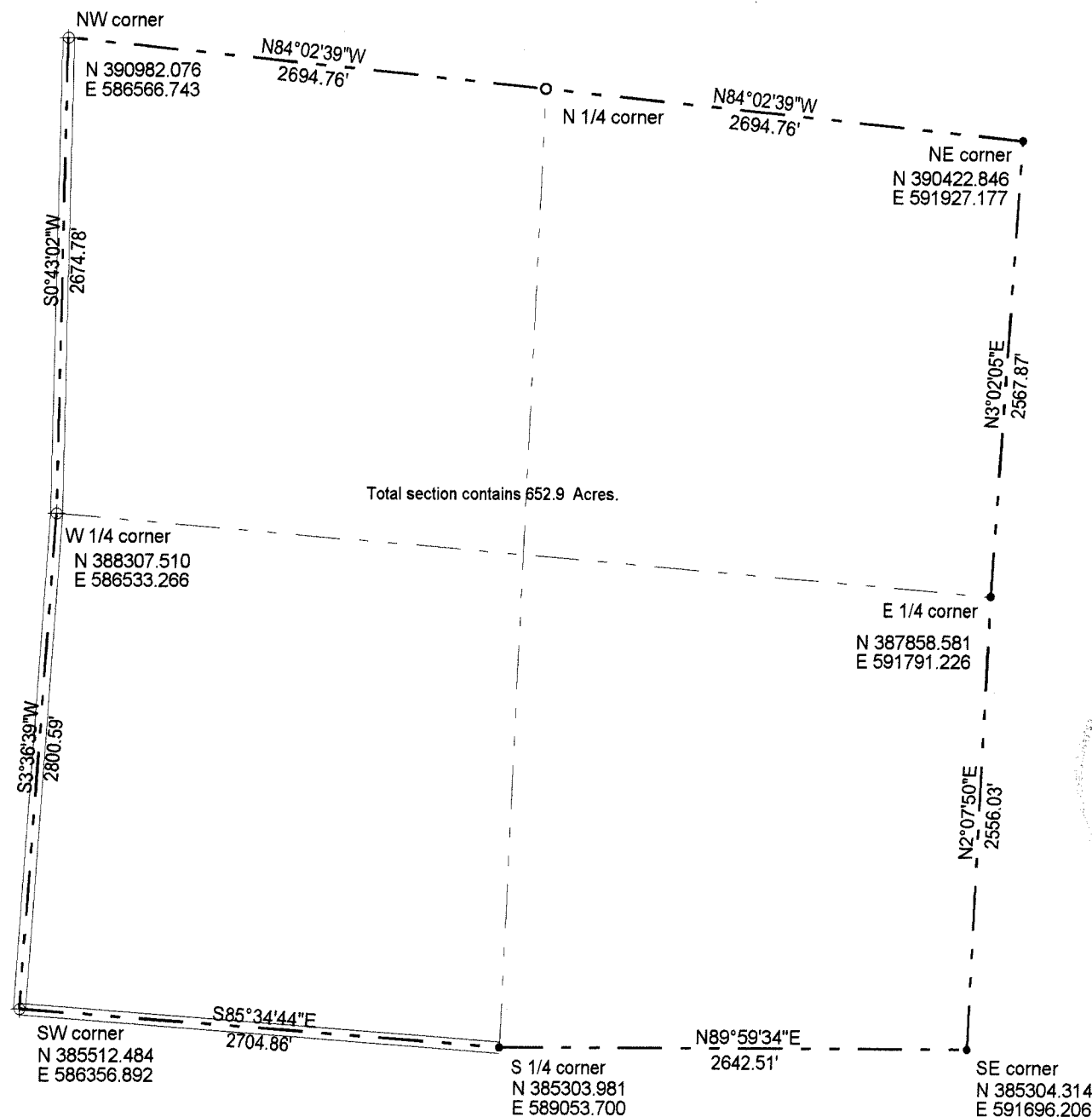
David E. Tlusty, RLS-1390

RECORD # 10678

LANGLADE COUNTY SURVEYORS OFFICE

DATE FILED: 12/29/04 BY: D. Tlusty

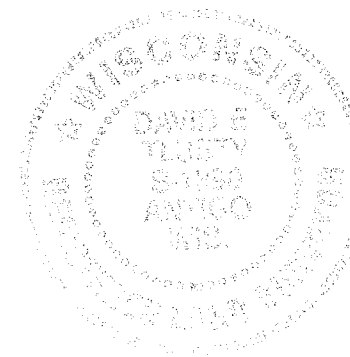
LANGLADE COUNTY COORDINATE SYSTEM GRID BEARINGS SHOWN



Section 8, T32N, R10E Town of Peck

All coordinates shown are Langlade County Coordinate system grid coordinates obtained by direct RTK GPS observations on the corners. All corners shown have ties sheets on file in the Langlade County Surveyors office.

The Northeast corner and the East 1/4 corner are 3" iron pipes with iron caps previously set by Hutchinson. The Southeast corner is a 2" iron pipe with brass cap set by Tlusty. The South 1/4 corner is an aluminum capped iron pipe set by Arnott. The Southwest corner, West 1/4 corner and the Northwest corner are nails set by using the most recent ties sheets on file for these corners. The North 1/4 corner has been searched for and no evidence of the Hutchinson pipe has been found. The corner has been determined to be lost and has been re-established by single proportionate methods between adjoining section corners.



I, David E. Tlusty, Langlade County Surveyor, do hereby certify that this map is a true and correct representation of a survey of the perimeter of Section 5-32-10, and that this survey is correct to the best of my knowledge and belief.

December 28, 2004

David E. Tlusty, RLS-1390

02/02/05 revised north line

RECORD #

10678

LANGLADE COUNTY SURVEYORS OFFICE

DATE FILED: 2/2/05

BY: D. Tlusty

- 1" x 60" monument set
- monument found
- ◆ nail set from tie sheet