

LANGLADE COUNTY U.S. PUBLIC LAND CORNER RESTORATION

The Quarter corner common to Sections 20 and 29, T. 31 N., R. 11 E., Langlade County, WI..

Corner was: (check all that apply) 4311120 0020 2026

- Restored through acceptance of an obliterated evidence location.
- Restored through acceptance of a found perpetuated location.
- Determined to be lost and re-established through proportionate methods.
- Show bearings and distances to PLSS corners used for proportioning, and show original distances).
- Restored/recovered/re-established in a location that differs from a previously established position.
- (Show difference in plan view below).
- Check here if addition information is shown on the reverse side of this form.

Describe record evidence, recovered physical evidence, occupational evidence, testimonial evidence and all other evidence considered in the recovery/restoration of the corner.

1860 The original corner was established by Hiram Fellows. Original bearing trees: hemlock, 18", N62E, 11 lks. and a fir, 7", S80E, 21 links.

1884, April 5, B.F. Dorr, in FB140-12, measured the N-S and E-W quarter lines in Section 20. His N-S line reported as 5183.6 feet compared to about 5407 feet today, but I believe Dorr was using the "old" N1/4 corner which would now yield a distance of about 5234 feet.

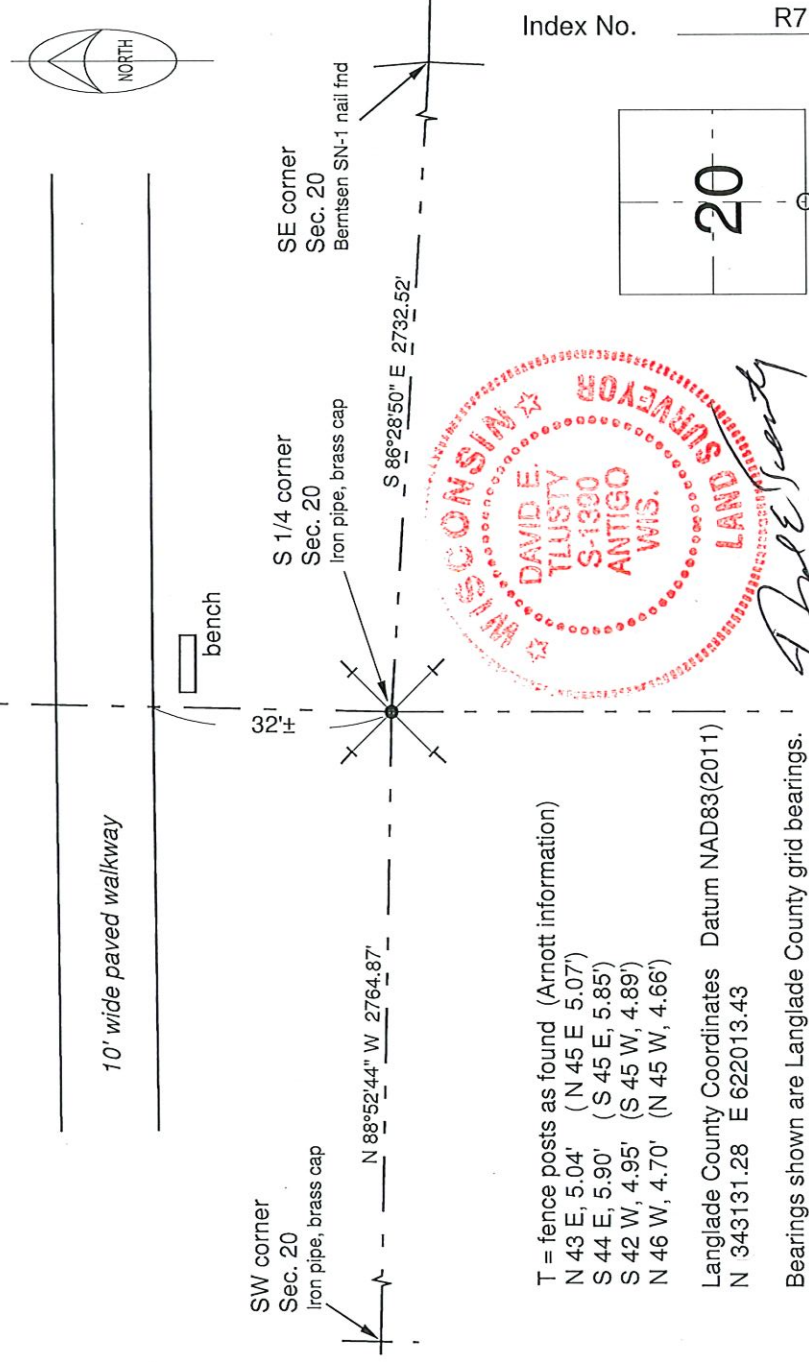
1884, May 6, B.F. Dorr, in FB140-13, measured the N-S quarter line in Section 29 to the south at 84.30 ch (5563.8 ft.). The current length of that line is 5449.0 ft. We have no way to know why Dorr's distances don't come close to current measurements but could be attributed to him using local residents for measuring.

History continued on reverse.

Physical description of the monument set:

I left the existing 2" iron pipe with brass cap in place.

Describe the accessories used to perpetuate the corner. Include a plan view drawing and accessories found/set. Describe measuring point on bearing trees. Show any topographic features that would aid in future recovery of the corner.

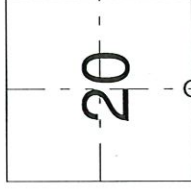


T = fence posts as found (Arnett information)
 N 43 E, 5.04' (N 45 E 5.07')
 S 44 E, 5.90' (S 45 E, 5.85')
 S 42 W, 4.95' (S 45 W, 4.89')
 N 46 W, 4.70' (N 45 W, 4.66')

Langlade County Coordinates Datum NAD83(2011)
 N 343131.28 E 622013.43

Bearings shown are Langlade County grid bearings.

Index No. R7 31-11



O = corner perpetuated
 The South Quarter
 corner of Section 20,
 T. 31 N., R. 11 E.,
 Langlade County, WI

I, David E. Tlusty, Registered Land Surveyor, as Langlade County Surveyor, certify that the corner location on this record was determined by me and that this U.S. Public Land Survey Monument Record is correct to the best of my knowledge and belief.

DAVID E. TLUSTY
 LAND SURVEYOR
 S-1390
 ANTIGO
 WIS.
David E. Tlusty
 5/27/26

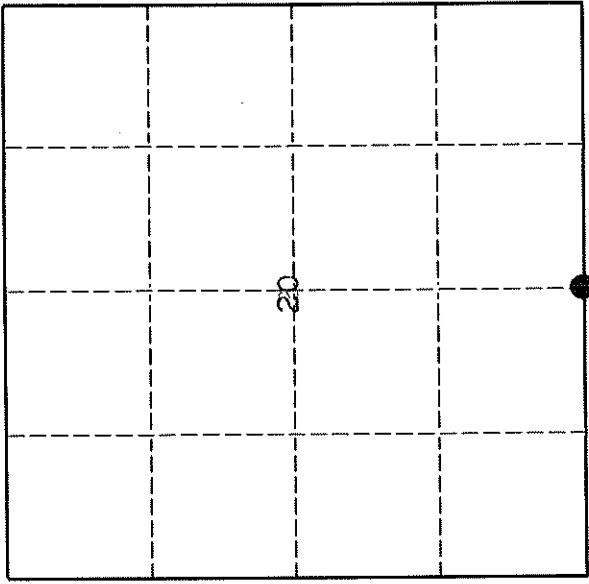
43/11200020

U. S. PUBLIC LAND SURVEY MONUMENT RECORD

INSTRUCTIONS:

This record shall show the location of the corner and shall include all of the following nine elements (a through i).

- (a) Identify the corner by reference to the U.S. public land survey system.
- O = Corner monument restored.



1/4 Corner sections 20 and 29

T31N, R1E

- (b) Describe any record evidence, monument evidence, occupational evidence, testimonial evidence or any other material evidence you considered, and whether the monument was found or placed.

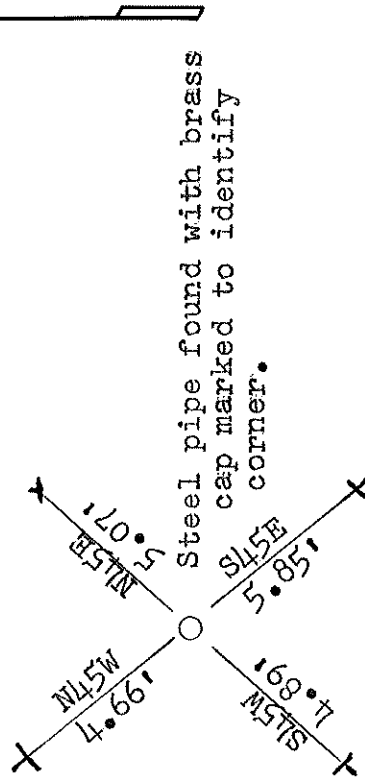
Found a steel pipe with a brass cap marked to identify the corner. Monument was probably set by Henry Olk.

- (c) In the plan view drawing below, provide reference ties to at least 4 witness monuments, or, if the location is within a municipality, to at least 2 witness monuments. (Witness monuments shall be made of concrete, natural stone, iron or other equally durable material.) Describe witness monuments.

Set 4 steel fence post around monument for not only guards but for ties. No other material available for suitable ties.

- (d) Show a plan view drawing depicting the relevant monuments and reference ties which is sufficient in detail to enable accurate relocation of the corner monument if the corner monument is disturbed. Indicate north.

Set steel post with sign 1.6' north of monument.



4311200020

Describe any material discrepancy between the location of the corner as restored or reestablished and the location of that corner as previously restored or reestablished by distance and direction. Show the discrepancy on the plan view drawing under (d), above. Show the distances between the corner as previously restored or reestablished and (1) the corner as restored or reestablished, and (2) to at least 2 of the witness monuments shown on the drawing in (d), above.

N/A

(f) Was the corner restored through acceptance of (1) an obliterated evidence location, or, (2) a found perpetuated location.?

No. 2

(g & h) Was the corner reestablished through lost corner proportionate methods? If so, show the method, including the directions and distances to other public land survey corners used as evidence or used for proportioning in determining the corner location.

No

(i) I, Thomas Arnett,
(type or print name)

certify that the corner location shown on this record was determined by me or under my direction and control and that this U.S. Public Land Survey Monument Record is correct and complete to the best of my knowledge and belief.



Signature

2 July 1992

Date

