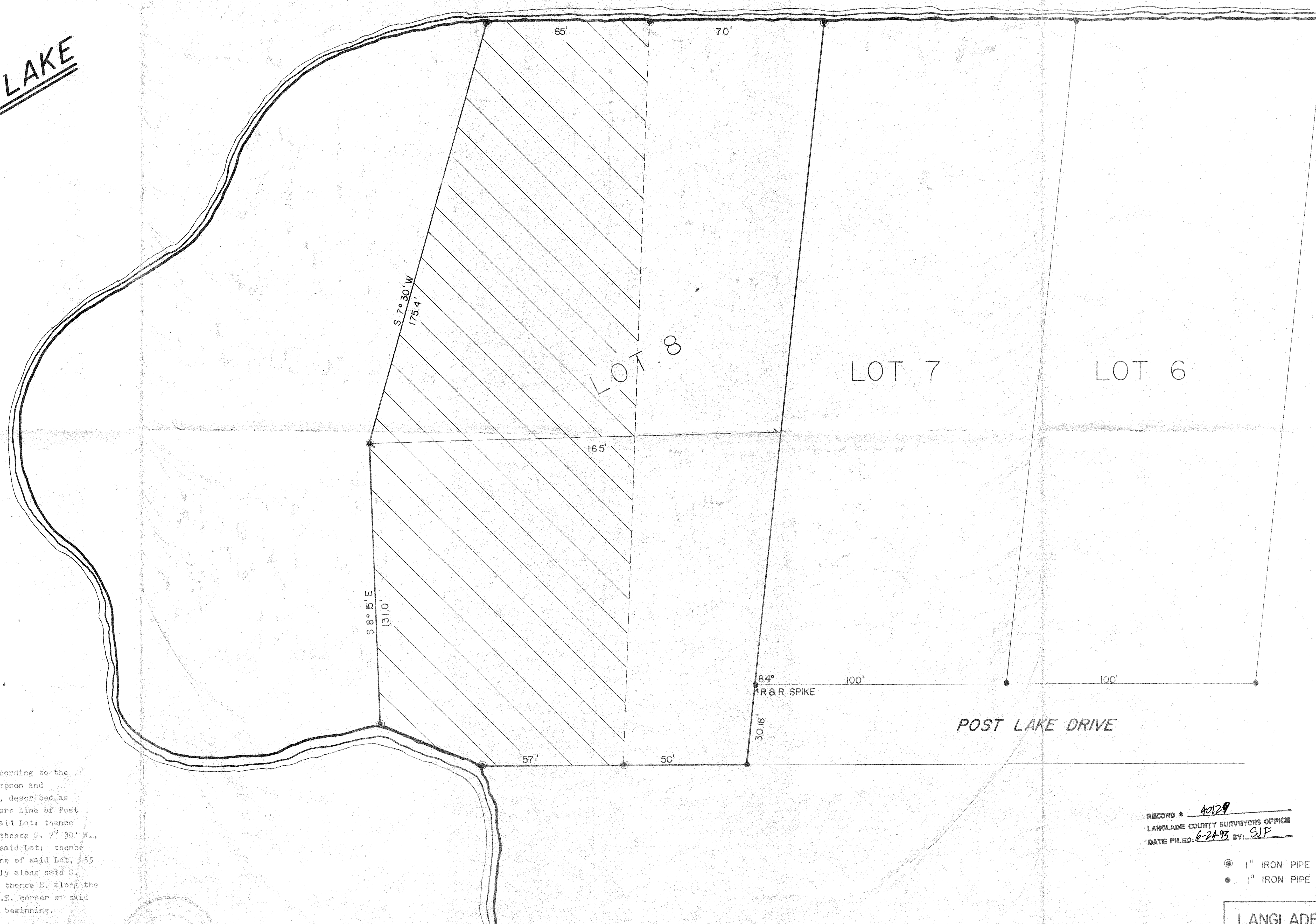


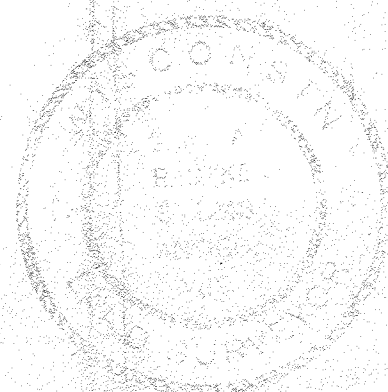
POST LAKE



DESCRIPTION

That part of Lot 8 of the Plat of Pinehurst, according to the corrected plat thereof, as platted by Charles H. Thompson and Eda Thompson, his wife, and of record in said County, described as follows: commencing at a point 70 feet along the shore line of Post Lake in a W.'rly direction from the N.E. corner of said Lot; thence 65 feet in a W.'rly direction along said shoreline; thence S. 7° 30' W., 175.4 feet to a point 165 feet W. of the S. line of said Lot; thence S. 8° 15' E., 131 feet to a point on the S. shore-line of said Lot, 155 feet W. of the S.E. corner of said Lot; thence E.'rly along said S. shoreline to the N.W. corner of Lot 9 of Pinehurst; thence E. along the S. line of said Lot 8 to a point 50 feet W. of the S.E. corner of said Lot 8; thence in a N.'rly direction to the place of beginning.

Surveyed By: Gary A. Radtke RLS 5-1248
8/6/75 *Gary A. Radtke*



RECORD # 40128
LANGLADE COUNTY SURVEYORS OFFICE
DATE FILED: 6-24-75 BY: GJR

- 1" IRON PIPE LDC PLACED
- 1" IRON PIPE

LANGLADE DEVELOPMENT			
SCALE: 1" = 20'	PROVISIONS	BY	DATE
DATE: 8-1-75			
DRN: 1	CAD:		
TITLE: GEORGE BUCKLEY		NO: 264-75	

DESCRIPTION

Surveyed By: Gary A. Radtke RLS S-1248
8/6/75 *A R. Radtke*

Harry A. Radtke

LANGLADE DEVELOPMENT			
SCALE	H = 20'	REVISIONS	BY DATE
DATE	8-1-75		
DRN	jf		
AP'D			

40129
RECORD # ~~40267~~
LANGLADE COUNTY SURVEYORS OFFICE
DATE FILED: 10/08/97 BY: B.M.

10146	NO.
GEORGE BUCKLEY	264-75